

FRONT

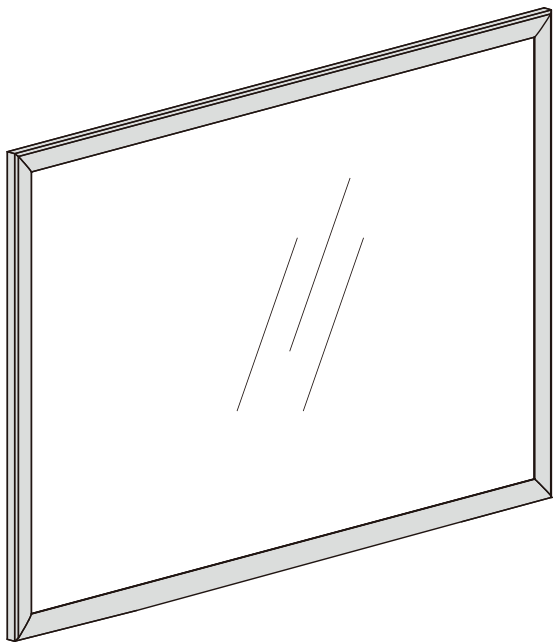
108.0 mm

108.0 mm

108.0 mm

108.0 mm

140.0 mm



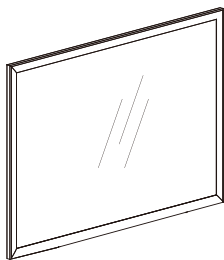
2 ft x 1.5 ft
2 ft x 2 ft
3 ft x 2 ft
4 ft x 3 ft
5 ft x 3 ft

BULLETIN BOARD
HANGING
INSTRUCTIONS

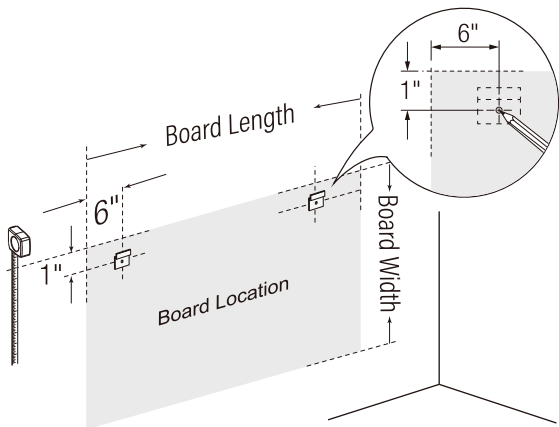
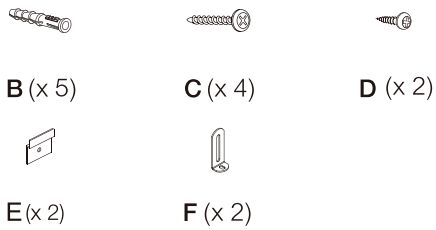
Required:



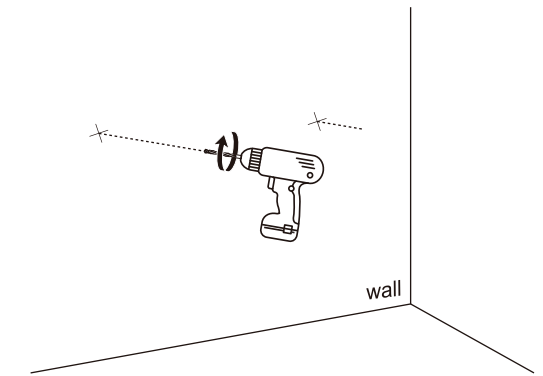
Included:



A (x 1)



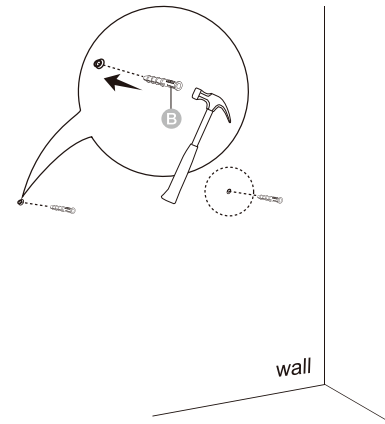
Measure the board size to determine the location, make sure the board is horizontally placed, then mark the location of bracket E.



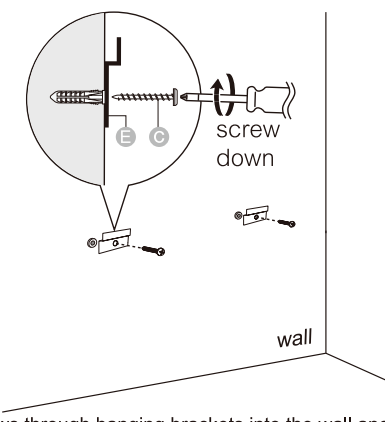
Drill holes for each hanger in marked locations using 1/4" drill bit.

1

2



Insert wall anchors into holes flush with the wall .



Insert screws through hanging brackets into the wall anchor, tighten firmly.

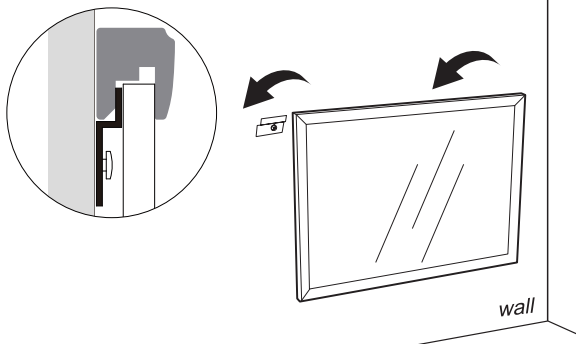
3

B (x 2)

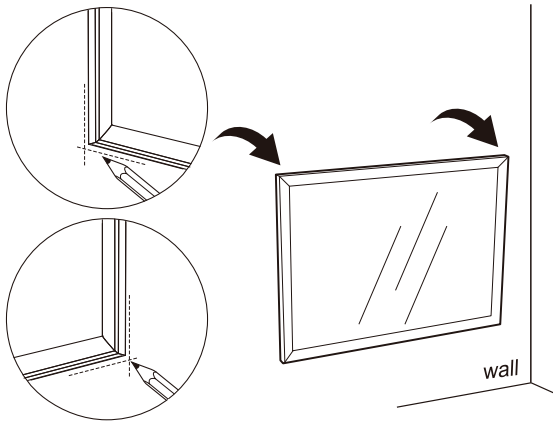
4

C (x 2)

E (x 2)



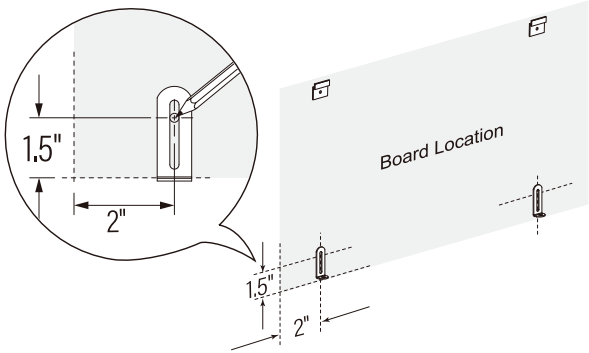
Holding the board, place the channel in the back of the frame over the wall anchors. Lower the board so it is flush to the wall.



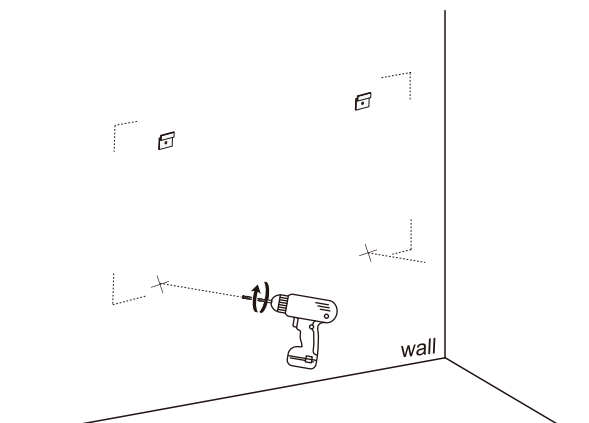
Draw lines along the board bottom frame, then remove the board from wall.

5

6



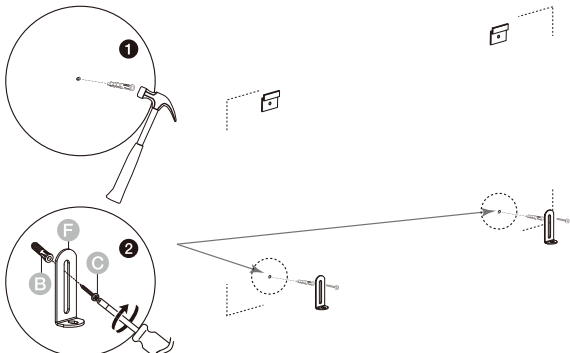
Mark the center position of bracket F



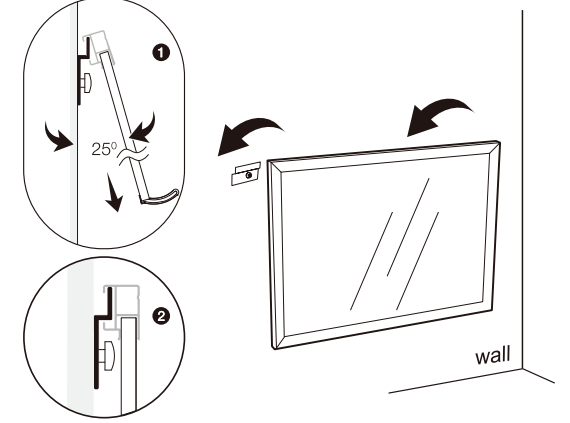
Use a 1/4" drill bit to drill in marked locations.

7

8



Insert wall anchors into holes flush with the wall, then insert screws through hanging brackets into the wall anchor.



Re-hang the board.

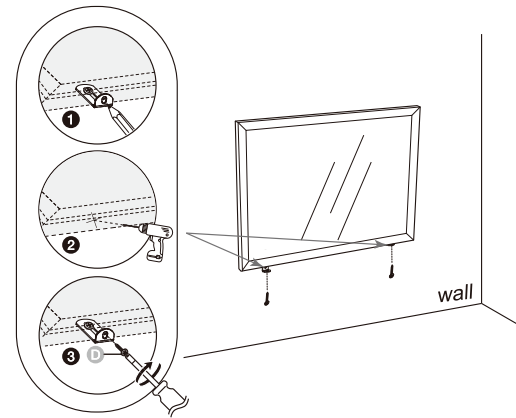
9

B (x 2)

C (x 2)

F (x 2)

10



Insert screw D through each bracket F and into pilot hole in frame. Tighten firmly.

11

D (x 2)

BACK

432.0 mm