

PRIVACY SCREEN INSTALLATION

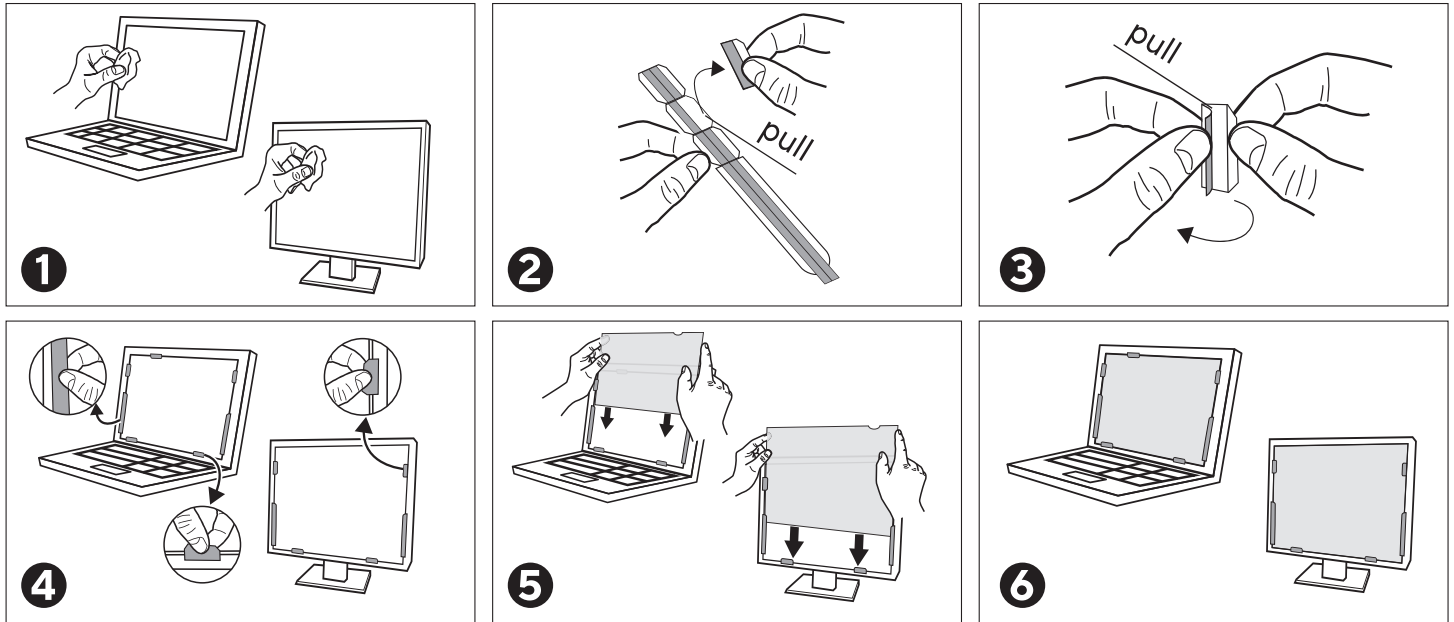
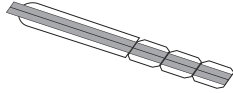
*Privacy Screens are only intended for use on laptops or monitor screens.

The screen is reversible with a matte and a glossy side. The matte side, which reduces glare, will appear slightly darker when facing you. Choose the side that best suits your preference.

Attachment Types:

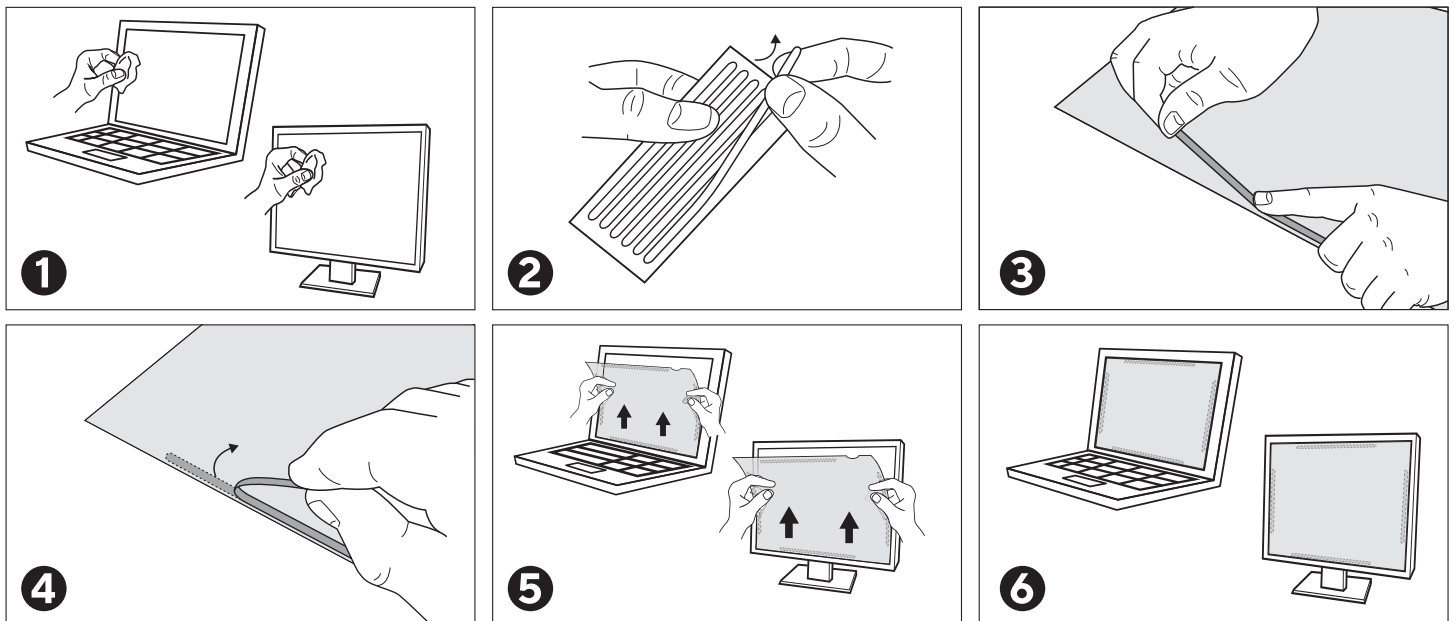
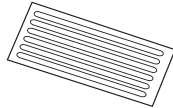
The bezel tabs are designed for raised-edge screens, while the adhesive strips are better suited for flat-edge screens.

Bezel Tabs



Place the bezel tabs along the raised edges of the sides of your screen.

2 Sided Adhesive Strips



Position the adhesive strips as close to the edge of the filter as possible to minimize their visibility on the screen. The number of adhesive strips needed may vary depending on screen size.

CAUTION

Do not bend the privacy screen filter. Do not use an abrasive cloth to clean the surface of privacy screen filter. Remove the protective film before application.