

WARRANTY

Staples® Brand Laminator Limited 1 Year Warranty

Staples Inc, ("Staples") warrants to the original purchaser that this Staples® brand laminator shall be free of defects in design, assembly, material, or workmanship for 1 year from the date of purchase. Staples' will either replace any such product with the same or equivalent product free of charge or refund 100% of the purchase price at Staples' sole option. To claim your replacement or refund, contact product support at 1-800-425-0049. If replacement is necessary as determined by Staples, you will be required to pack the product and ship it (at your expense) with the original sales receipt to the address you are provided by product support. No product will be accepted without first obtaining a Return Authorization Number from product support. You are responsible for the proper packaging of the product, for any and all damage resulting from shipping, and for all shipping charges to return the product to Staples. This warranty does not apply to normal wear or damage from misuse, abuse, improper storage or handling, installation, accident, repair or alteration or ther circumstances not directly attributable to manufacturing or material defect.

THIS WARRANTY IS EXCLUSIVE AND IN LIEU OF ALL OTHERS, WHETHER ORAL OR WRITTEN, EXPRESS OR IMPLIED. STAPLES SPECIFICALLY DISCLAIM ANY AND ALL IMPLIED WARRANTIES, INCLUDING WITHOUT LIMITATION, WARRANTIES OF MERCHANTABILITY AND FITNESS FOR A PARTICULAR PURPOSE. IN NO EVENT WILL STAPLES BE LIABLE FOR ANY INCIDENTAL, DIRECT, INDIRECT, SPECIAL, PUNITIVE, OR CONSEQUENTIAL DAMAGES (SUCH AS BUT NOT LIMITED TO, DAMAGES FOR LOSS OF PROFITS, BUSINESS, SAVINGS, DATA OR RECORDS) RELATED TO THIS PRODUCT.

This warranty gives you specific legal rights, and you may also have other rights that vary depending upon the state, province, territory or country. Some states, provinces and territories do not allow the exclusion or limitation of incidental or consequential damages or limitation on how long an implied warranty lasts. Except as stated herein, no other warranties shall apply.

FCC STATEMENT

This device complies with Part 15 of the FCC Rules. Operation is subject to the following two conditions: (1) This device may not cause harmful interference, and (2)this device must accept any interference received, including interference that may cause undesired operation.

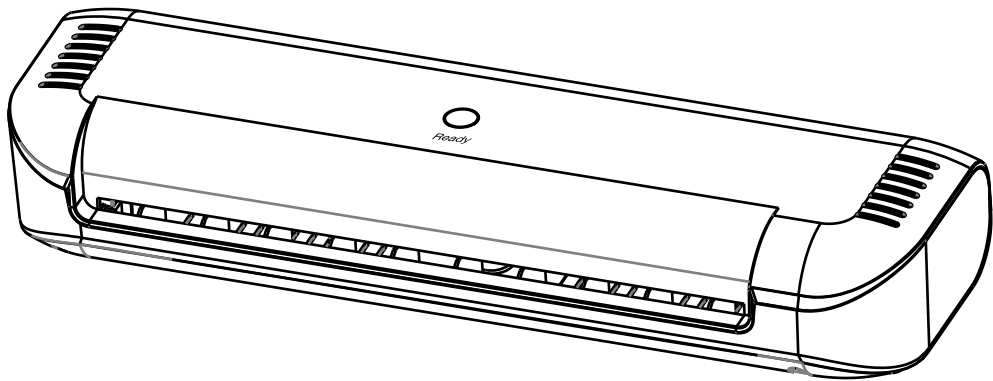
Note: This equipment has been tested and found to comply with the limits for a Class B digital device, pursuant to part 15 of the FCC Rules. These limits are designed to provide reasonable protection against harmful interference in a residential installation. This equipment generates, uses and can radiate radio frequency energy and, if not installed and used in accordance with the instructions, may cause harmful interference to radio communications. However, there is no guarantee that interference will not occur in a particular installation. If this equipment does cause harmful interference to radio or television reception, which can be determined by turning the equipment off and on, the user is encouraged to try to correct the interference by one or more of the following measures:

- Reorient or relocate the receiving antenna.
- Increase the separation between the equipment and receiver.
- Connect the equipment into an outlet on a circuit different from that to which the receiver is connected.
- Consult the dealer or an experienced radio/TV technician for help.

Help Line

United States1-800-425-0049

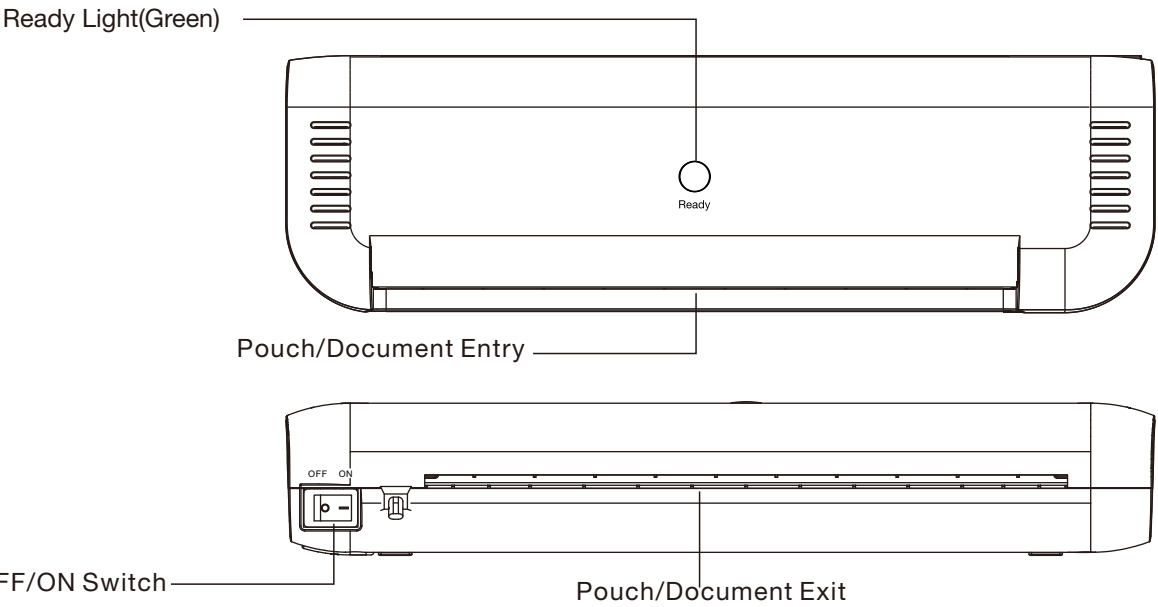
Staples®



LAMINATOR

MODEL: ST62539

Please read these instructions before use.



CAPABILITIES

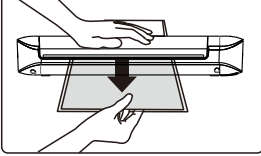
Pouch Thickness	3-5 mil	Maximum Width	9"(230 mm)
Estimated Heat-Up Time	3-4 Minutes	Voltage	120V~
Approximate Cool-Down Time	60 Minutes	Frequency	60Hz
Lamination Speed	12" (30 cm)/Minute	Power Consumption	140W
operating temperature	25°C	Altitude during operation	≤2000mm

IMPORTANT SAFETY INSTRUCTIONS -Read Before Using!



- The socket-outlet shall be installed near the equipment and shall be easily accessible.
- To prevent electrical shock, do NOT use laminator close to water and do NOT spill water on laminator, electric cord, or wall socket.
- Do not leave electric cord in contact with a warm surface.
- Do not leave electric cord hanging from a cupboard or shelf.
- Do not use laminator if electric cord is damaged.
- Do not laminate metal objects.
- Always supervise children during laminator operation.
- It is for general and indoor use only and not used by children.
- This equipment is not suitable for use in locations where children are likely to be present.
- This apparatus was evaluated for use in an operating ambient temperature of 25°C.
- The equipment intended to used up to 2000m above sea level.
- Keep pets away from laminator while in use.
- Switch off and unplug laminator when not in use.
- Do not open or attempt to repair the laminator yourself, as this could result in electric shock and will void your warranty. Contact Customer Service if you have questions. Please note the warranty does not apply in cases of abuse,mishandling or unauthorized repair.

FEATURES & TIPS

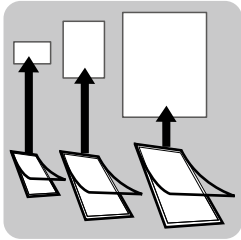


'Release' function  
If a jam occurs, grip the pouch firmly with one hand and hold down the machine while pulling the pouch towards you and out of the laminator.

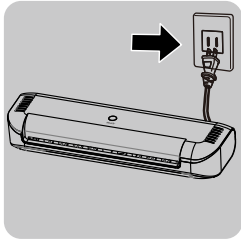
- This machine does not need a carrier to laminate. It is a carrier-free mechanism.
- Always put the item to be laminated into the appropriate sized pouch
- Always test laminator with a similar size and thickness before final proces.
- Prepare pouch and item for lamination. Place item within pouch centered and touching the leading sealed edge. Ensure the pouch is not too large for the item.
- If required, trim excess material from around the item after lamination and cooling.
- Always put item in a pouch. Never laminate an empty pouch.
- Trim excess pouch material from around your item after laminating and cooling.
- Before laminating valuable items, do a test run with an item similar in size and thickness.
- Use a dry-erase marker for writing on laminated pouches.

BEFORE YOU LAMINATE

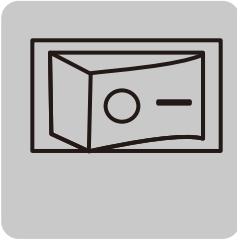
Select correct pouch size for laminated item.



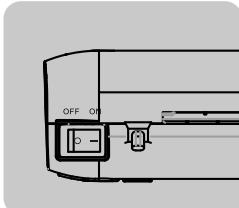
Plug laminator into power outlet. Position laminator so you have enough space to allow items to pass freely through the machine.



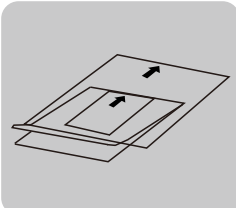
Switch laminator on (I).



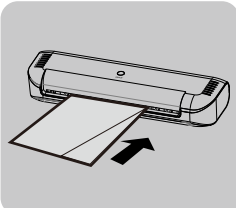
STEPS FOR HOT LAMINATION



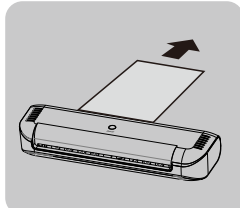
Ensure temperature switch on side of machine is set to on. Wait for green light.



Place item inside pouch against the sealed edge.



Place pouch, sealed edge first, into laminator entry. Keep pouch straight.



To prevent jamming, immediately remove laminated item from back of machine. Let item cool on flat surface for several seconds

TROUBLESHOOTING

Problem	Possible cause	Solution
No 'power on' lamp (green LED)	Machine not switched on	Switch on machine at the back and at the wall socket
No 'ready' lamp after a long period (green LED)	Machine is in a hot or humid area	Move the machine to a cooler and dry area
Pouch is lost in the machine	Pouch is jammed	Take the pouch directly from machine by hand
Jamming	Pouch was used 'open end' First	
	Pouch was not centered on entry	
	Pouch was not straight upon entry	
Pouch is damaged after lamination	Empty pouch was used	Pass cleaning sheets through the machine to test and clean rollers
	Damaged rollers or adhesive on rollers	

Need Help?  
Customer Service:  
US:1-800-425-0049